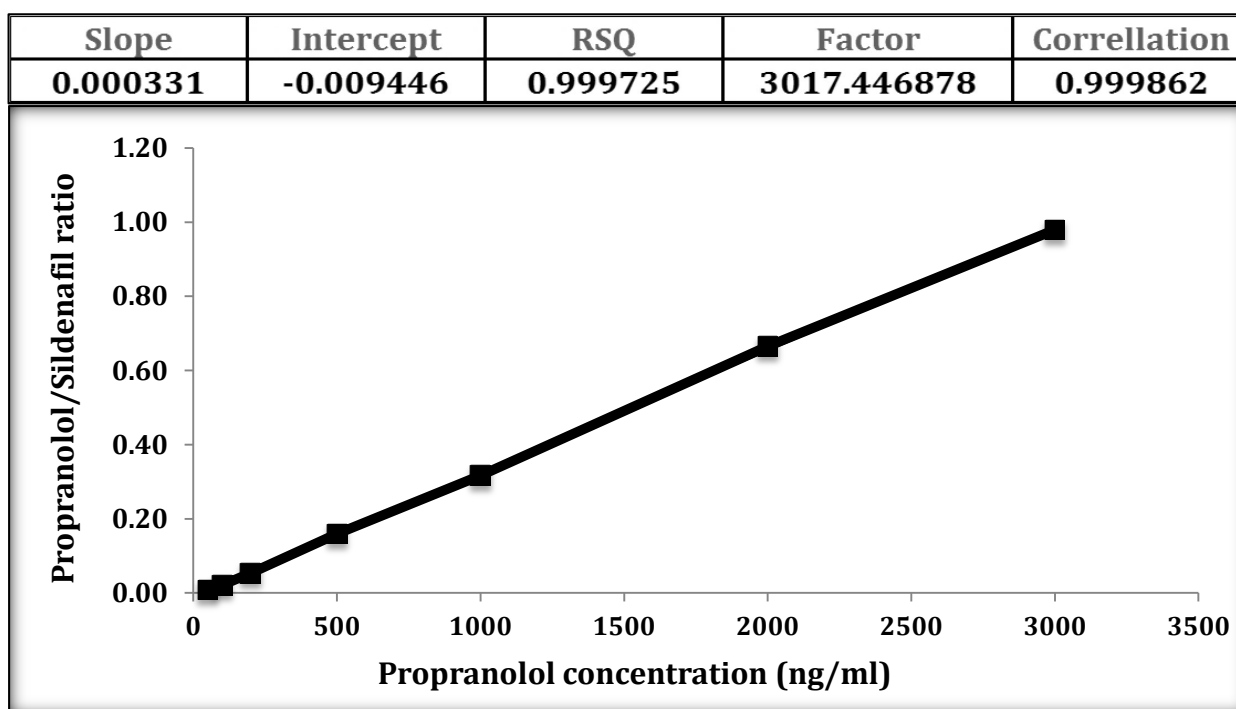


### 3.2.4.2 Calibration curve 2

**Table 3.37** Calibration curve data of intra-day two of validation.

Theoretical conc. (ng/ml)	Propranolol Area	Sildenafil Area	Ratio	Measured Conc.	Accuracy %
50	1154	131469	0.0088	54.990	109.98
100	2658	123895	0.0215	93.239	93.24
200	7058	131618	0.0536	190.314	95.16
500	18740	117309	0.1597	510.538	102.11
1000	40905	129244	0.3165	983.509	98.35
2000	85807	129035	0.6650	2035.076	101.75
3000	114505	116971	0.9789	2982.337	99.41



**Figure 3.9** Intra-day two calibration curve of propranolol in serum.

Measured Conc. = (Ratio +0.009446)/ 0.000331  
 Function is  $Y = 0.000331X - 0.009446$  ( $R^2 = 0.999725$ ).